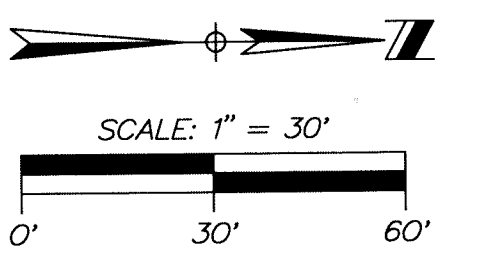
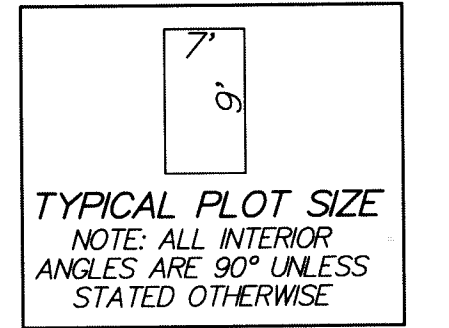


COUNTY OF PALM BEACH
STATE OF FLORIDA
THIS PLAT WAS FILED FOR RECORD AT _____
THIS _____ DAY OF _____
20____, AND DULY RECORDED IN PLAT BOOK NO. _____
ON PAGE _____
SHARON BOCK, CLERK OF CIRCUIT COURT
BY _____ D.C.



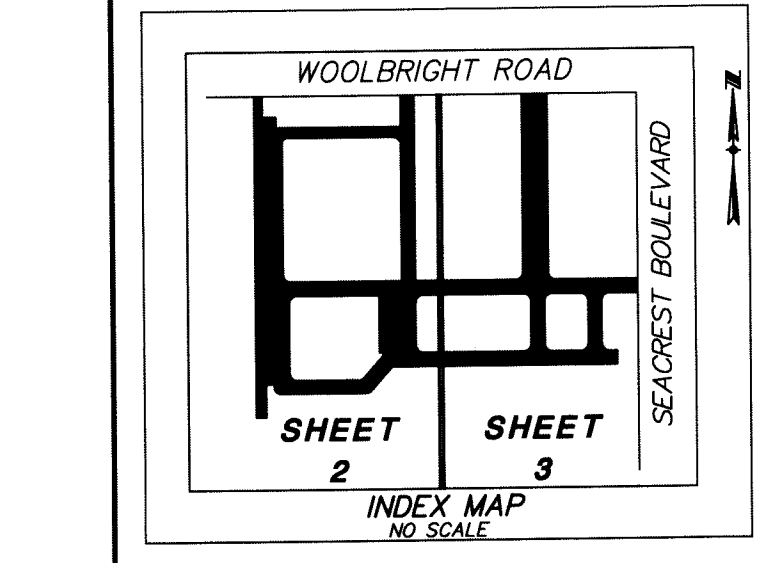
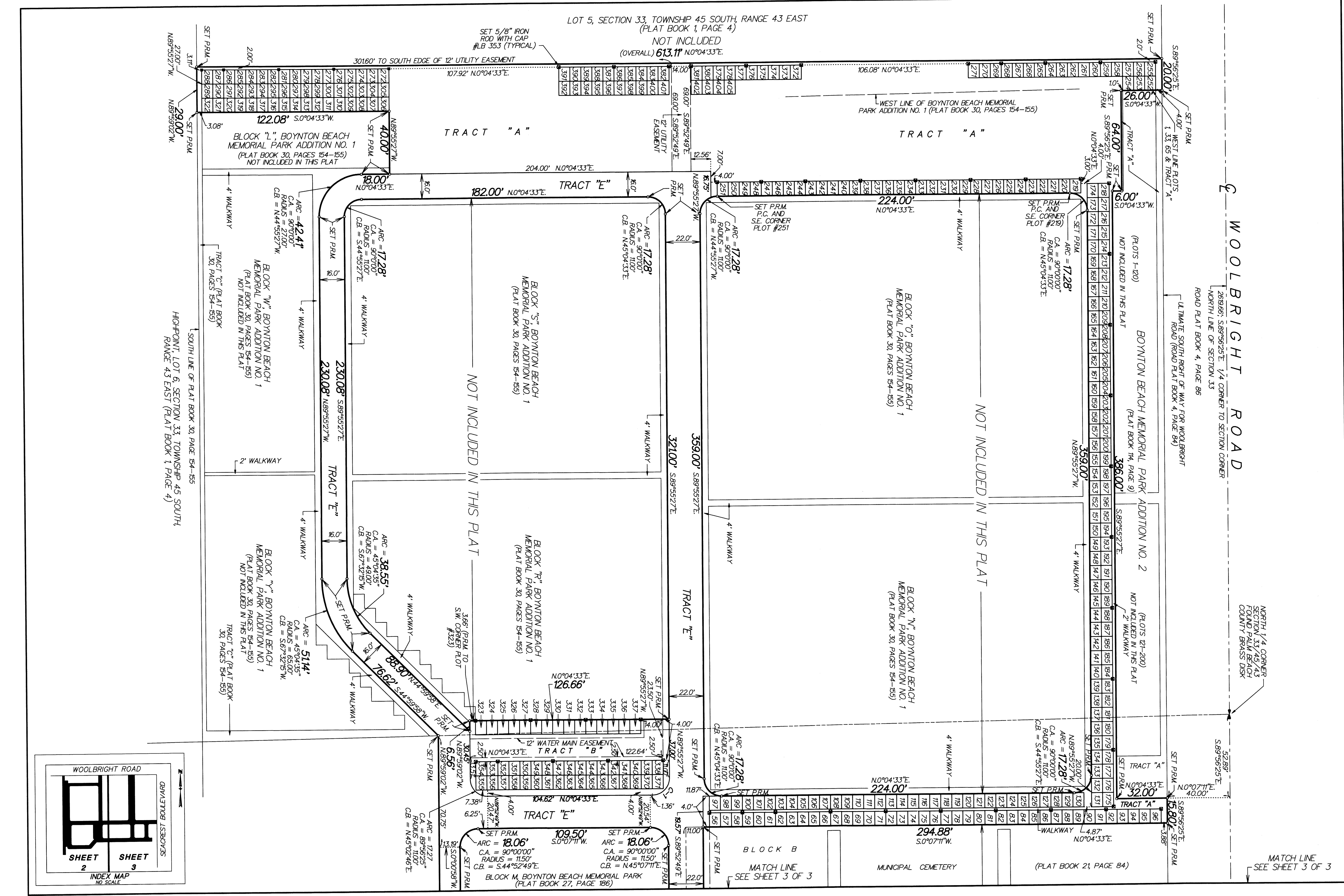
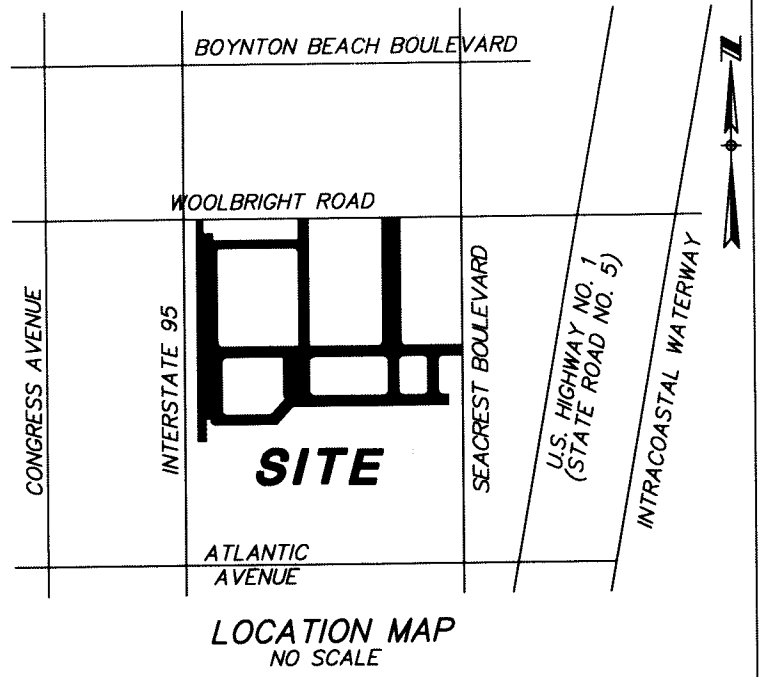
LEGEND:
CL = CENTERLINE
P.B. = PLAT BOOK
PG. = PAGE
P.C. = POINT OF CURVATURE
C.A. = CENTRAL ANGLE
C.B. = CHORD BEARING
SECTION 33/45/43 = SECTION 33, TOWNSHIP 45 SOUTH, RANGE 43 EAST
P.R.M. = PERMANENT REFERENCE MONUMENT (4" X 4" CONCRETE MONUMENT STAMPED "LB 353")



BOYNTON BEACH MEMORIAL PARK PLAT 3

BEING A REPLAT OF A PORTION OF LOT 5, SECTION 33, TOWNSHIP 45 SOUTH, RANGE 43 EAST (P.B. 1, PG. 4); A PORTION OF MUNICIPAL CEMETERY (P.B. 21, PG. 84); A PORTION OF BOYNTON BEACH MEMORIAL PARK (P.B. 27, PG. 186); A PORTION OF BOYNTON BEACH MEMORIAL PARK ADDITION NO. 1 (P.B. 30, PG.'S 154-155) AND A PORTION OF BOYNTON BEACH MEMORIAL PARK ADDITION NO. 2 (P.B. 114, PG. 9) ALL BEING IN SECTION 33, TOWNSHIP 45 SOUTH, RANGE 43 EAST, CITY OF BOYNTON BEACH, PALM BEACH COUNTY, FLORIDA.

SHEET 2 OF 3
MAY 2017



Z:\06\04\01 - 01/23/2017 - 09:47 AM - Scale 1:100000